

ypi[®]

**YOUTH AND
PHILANTHROPY
INITIATIVE
SCOTLAND**

Name:	
Class:	
RE Teacher:	
PSHE Teacher:	

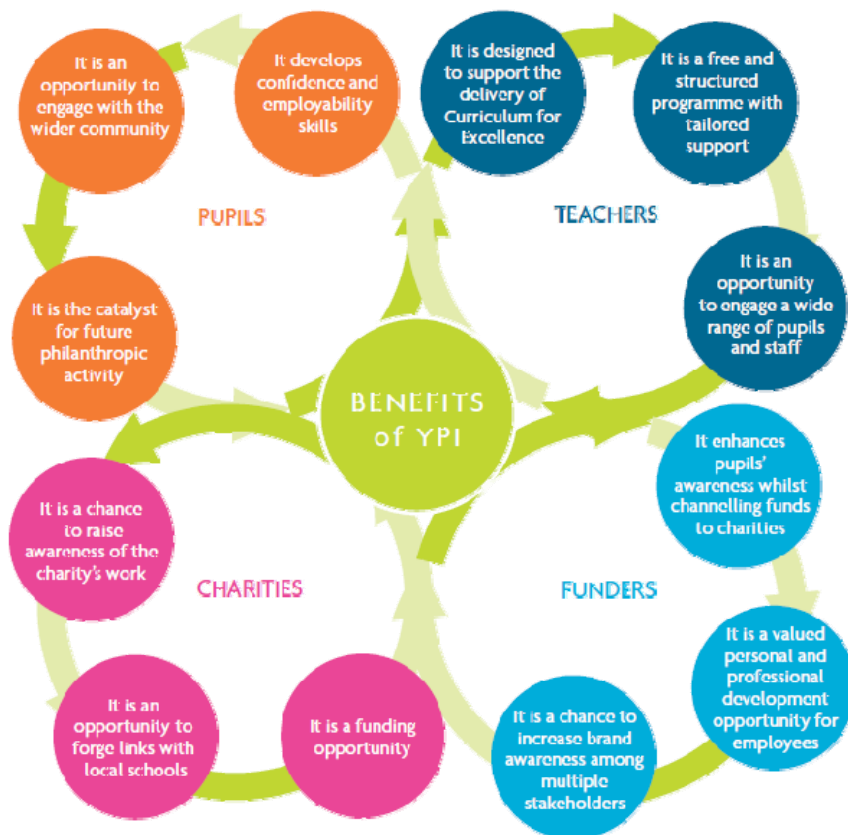


Saint Ninian's High School

Pupil Booklet

The Youth and Philanthropy Initiative (YPI) is an active citizenship programme that raises awareness amongst young people about philanthropy and your local community. Each team is responsible for directing a £3000 YPI Grant to a local charity through a unique programme of team work, research and competition. YPI Scotland is all about creativity and passion, leaving the four walls of the classroom behind, and supporting the issues you care most about.

Benefits of YPI



Aims of YPI

Learning Intentions	<ul style="list-style-type: none"> • Develop an understanding of philanthropy • Broaden your knowledge of your local community and the work of local charities • Develop a vast range of team work and presentation skills
Success Criteria	<ul style="list-style-type: none"> • Collation and presentation of independent research • Communication with local charities and tem members • Strong creative presentation pitch to win your chosen charity £3000

Key Dates for your Diary

Launch Event:

- 29th Sept Period 3

Semi Final Presentations:

- W/C Monday 12th December

Finalist Presentation Deadline:

- Fri 27th January

YPI Final - Evening Event:

- Thursday 2nd February 2017 7-10pm

RESEARCH, VISIT, PRESENT

The YPI Process

goypi.org



YPI Launch

Students learn how the programme works through a year group assembly or class based introduction.



Form teams

In small teams, students identify the social needs of their local community.



Research

Teams research and analyse a number of local charities in their community.



Choose a charity

Teams select the charity they believe best addresses their chosen issue.



Charity Contact

Teams contact & visit their charity to gain a detailed understanding of what they do and how they operate.



Presentations

Each team then prepares and delivers a presentation focused on their chosen charity, detailing what impact £3000 would have on the service they provide.



YPI Finals

The most discerning teams then deliver their presentations & compete for the £3000 YPI Grant in front of a panel of judges at their YPI School Final.

Timeline



**YOUTH AND
PHILANTHROPY
INITIATIVE
SCOTLAND**

Throughout the YPI project, you will work with your RE and PSHE teachers as well as Mrs Baird (Librarian). See the timeline below for a guide to your YPI journey!

Week Beginning	Course Plan	Page	Slide	Homework Plan
Mon 26th Sept	YPI Launch S2 Assembly - Visiting speaker Alistair Cairns Thursday 29th September - Period 3			
Mon 3rd Oct	Lesson 1 - RE Introduction, video clips, class discussion	5	1-9	YPI research
Mon 10th Oct	Lesson 2 - RE What do I value?	6,7,8	10,11	Values research
Mon 17th Oct	October Break			YPI research
Mon 24th Oct	Lesson 3 - RE Team details, Social issues and values	9,10, 11	12,13	Social issues and values research
Mon 31st Oct	Lesson 4 - RE Researching and presenting your social issue	12,13	14	Social issues & charity research
Mon 7th Nov	Lesson 5 - RE YPI Grant Criteria, Our chosen charity	14,15	15,16	Research, organise visit to charity
Mon 14th Nov	RE - One lesson available to complete tasks if required	16,17	16	Visit charity
Mon 21st Nov	Presentation Skills Year group assembly - Librarian Lesson 6 - PSHE Presentation success criteria Presentation plan	18, 19	17 18,19	Presentation preparation - Lunchtime drop in sessions
Mon 28th Nov	Lesson 7 - PSHE Presentation plan	19	18,19	Presentation preparation - Lunchtime drop in sessions
Mon 5th Dec	Lesson 8 - PSHE Presentation plan	19	18,19	Presentation preparation - Lunchtime drop in sessions
Mon 12th Dec	Lesson 9 - PSHE Semi finals - presentation to peers		20	
Mon 19th Dec	Lesson 10 - PSHE Semi finals - presentation to peers		20	
Mon 26th Dec	Christmas Holiday			Finalist groups refining / tweaking
Mon 2nd Jan				
Mon 9th Jan				"
Mon 16th Jan				"
Mon 23rd Jan				"
Mon 30th Jan	YPI Final Evening event 10 groups presenting to pupils, parents, guests from represented charities, judging panel Thursday 2nd February 7pm			

RE - Lesson 1

Class Discussion

Your teacher will show you some short videos relating to YPI...

- What is YPI and why is my school participating?
- What is philanthropy?
- What are values and what do I value?
- What is a social service charity?
- What role do social service charities have in our community/country?

RE - Lesson 2

What do I value?

Compare the values statements and choose the three that are most important to you. These statements link to a 'value' in the values key below. Use this to reveal your set of personal values. Record the results on question 1 on the following page.

Values Statements:

A) I believe everyone should have the same opportunities and rights.	B) I believe everyone should be allowed to express different ways of living and thinking.	C) I believe people who stand up for their beliefs should be respected and valued.	D) I believe it is important to find new and creative ways of doing things.	E) I believe it is important to take care of others and help them meet their needs.
F) I believe people should be noticed for their efforts and contributions.	G) I believe that people should be able to seek personal enjoyment and fulfilment.	H) I appreciate people who guide and inspire others.	I) I believe it is important for people to feel connected to and liked by others.	J) I respect and value people who are dedicated and effective at what they set out to do.
K) I believe it is important to feel sympathy, care or concern for others.	L) I believe it is important to pursue what is fair and morally right.	M) I believe people should have chances to experience progress and advancement.	N) I believe that it is important to continually pursue new skills and self awareness.	O) I believe it is important for people to be able to explore the unknown and to test limits.
P) I respect and value people who have the ability to influence others.	Q) I believe it is important to fulfil your commitments.	R) I believe it is important to participate in activities with groups of people and to feel connected to them.	S) I believe it is important for people to voluntarily do what is expected of them.	T) I believe it is important to nurture the relationship you have with your loved ones, and to spend time with them.

Values Key:

A) Equity	B) Tolerance	C) Courage	D) Innovation	E) Helping
F) Recognition	G) Pleasure	H) Leadership	I) Belonging	J) Competence
K) Compassion	L) Justice	M) Opportunity	N) Personal Growth	O) Risk
P) Power	Q) Obligation	R) Community	S) Responsibility	T) Family

1. Compare the values statements in the table on the previous page.
Choose the three that are most important to you. These statements link to a
'value' in the values key. Use this to reveal your set of personal values.
Record the Results below:

MY MOST IMPORTANT VALUES

-
-
-

2. Do you agree with the results? Do you think that the statements are a good description of the values?
What do these values mean to you?

3. Imagine some future situations where you could put your values into action.

Value: Courage Future Situation: Your friends are teasing a new student

Action: You stand up for the new student, even though it would have been easier not to. This takes courage.

Value: _____ Future Situation: _____

Action: _____

Value: _____ Future Situation: _____

Action: _____

RE - Lesson 3



Team details

Your teacher has allocated you a team based on the values that you chose as the most important to you. This means that your team members have similar interests and values to yourself. Record information about your team below. Each team member should be given an important role to play based on their key strengths (e.g. Team leader, researcher, scribe, presenter....)

	<u>Name</u>	<u>Role</u>	<u>Contact e-mail and telephone number</u>
1			
2			
3			
4			
5			

Social Issues and Social Service Charities

Social Issues

Social issues happen when people in your community face barriers to having everything they need for a healthy and independent life: financially, emotionally, physically, socially and mentally. Social issues affect individuals, families and communities as a whole: they are problems that prevent your local community from working as well as it can for everyone who lives there.

Social Service Charities

The charities that work to solve social issues are called social service charities. Social service charities provide assistance to people who need help to live safe, independent lives. The services provided by this sector are extremely broad and the people who benefit are varied and range from young children to elderly people. For example:

Social Issues

Services Provided by Social Service Charities

Elderly People:	Independence support, Respite, Physical Activity
Children:	Protection, Support and Shelter, Youth Clubs, Befriending, Sports
Unemployed People:	Training and Skills
Homeless People:	Shelter, Counselling, Training
Domestic Violence Victims:	Shelters, Counselling
Disabled People:	Support and Assistance, Access
Caregivers:	Young Carers, Support and Assistance
Young People:	Back to School Assistance, Mentoring, Activities
People in Conflict With The Law:	Rehabilitation
Newcomers:	Support services, Employment, Housing, Orientation
Refugees:	Support Groups, Shelters, Counselling
Addiction and Substance Misuse:	Support Groups, Rehabilitation
Victims of Crime:	Support, Justice
Eating Disorders:	Support and Assistance
Teenage Mothers and Fathers:	Support and Assistance, Parenting Courses
Single Parent Families:	Support and Assistance

Team Interests - Social Issues



You have now all selected values which are important to you and have read about social issues and social service charities. As a team, discuss and record the social issues that you are all passionate about and why. This will help you to begin the process of selecting a charity.

	<u>Social Issues</u>	<u>We are passionate about this because:</u>
1		
2		
3		
4		
5		

Think about your values and the schools values.

“The social service sector works towards **social inclusion**, access and **equality** through specific supports for **vulnerable** or **marginalised community members**.”

RE - Lesson 4

Researching your Social Issue

1. The social issues we chose is _____. This issue is important to our team because

2. How does this social issue impact our local community:

a) Who is impacted by this social issue in our community?

b) Name some specific examples of ways this issue has impacted people in our community:

3. What are some causes of this social issue? (e.g. historical or current)

4. Are politicians debating or speaking out on this issue?

5. What is one change a person can make to their everyday attitudes or behaviours that would help address the issue?

6. List the names of as many charities in your local community as you can that are working to address your social issue. *Use online search engines, talk to friends and family, visit your local community centre, read the newspaper etc. **Top Tip:** Please visit www.YPIscotland.org.uk for information about your country's online charity database; this will show you all of the registered charities in your area.*

7. List two interesting examples of work that charities are doing to address the social issue in your community:

a)

b)

8. Keep a record of the sources your team uses to find information (e.g. registered charity database. Government websites, charity websites, community centre, family/friends, etc)

RE - Lesson 5

YPI Grant Criteria

TO BE ELEGIBLE FOR A YOUTH AND PHILANTHROPY INITIATIVE GRANT, **CHARITIES MUST BE:**

- **REGISTERED WITH A GOVERNMENT AUTHORITY**
- **GRASSROOTS/COMMUNITY-BASED**
- **PROVIDING SOCIAL SERVICES DIRECTLY TO THE LOCAL COMMUNITY**

In Scotland, the **Office of the Scottish Charity Regulator (OSCR)** is the independent regulator and registrar of Scottish Charities. Please ensure that the charity you choose is registered here:

www.oscr.org.uk

- **Local:** The charity provides support and services directly to people in the local community.
- **Social:** The charity must provide social services, meaning it provides immediate assistance to those with basic needs and promotes the well-being of people.
- **Community-based/grassroots:** The charity is located in and provides services for people in the community, and in many cases, was started by people who saw a need in their community that they wanted to address.
- **Registered:** You must verify through your research that the organisation has official charitable status (OSCR)

Examples of charitable sectors that are **not** part of the YPI granting criteria:

- Medical research/equipment (health-related charities that provide social services for people and families living with illnesses would be considered eligible, such as special camps, arts therapy, counselling, etc.)
- Environmental sector
- International aid/development organisations
- Animal sector (charities that involve animals in providing social services to people are eligible e.g. guide dogs)
- Education sector (schools, universities, academic research)

Our Chosen Charity



Read the **YPI Grant Criteria** on the previous page. Your teacher will show you a short video relating to researching and choosing an appropriate local charity. Use this information to choose an appropriate charity to represent.

	Charity Information
Name of charity	
Proof of charitable status (e.g. Registration No.)	
What social service does the charity provide in the local community?	
How does the charity help people?	
Who does the charity help? (e.g. individuals, families, the community)	
Mission and values of the charity	
Is there anything that your team feels is unique or special about the charity?	
What is the charity's budget?	
What local impact could the charity make with the £3000 YPI grant ?	
How are you going to arrange to meet with your charity?	
When and where are you going to meet with your team?	

Contacting and visiting your chosen charity

Interview Questions

Your teacher will show you a short video about visiting your charity. By visiting your charity, you will gain a greater understanding of how your charity operates. Use this page to prepare questions which you will ask your charity...

Interview Response



Use this page to record all notes from your charity meeting.
Include questions and responses.

Presentation Success Criteria

In your final YPI presentation, you will need to demonstrate the research, presentation and teamwork skills you have practiced during YPI.

RESEARCH SKILLS	<p>Show the judges that you have conducted your research effectively by ensuring you have the following information in your presentation:</p> <ul style="list-style-type: none">• Proof of the charity's status (e.g. registered charity number)• An explanation of the social issue that the charity is addressing, and why your team believes the issue is important• Demonstrate your knowledge of the charity (purpose, values, brief history, significance in the community)• A clear explanation of the services the charity provides• The impact the charity makes in the community• Show how effective the charity is at using its resources (funds, volunteers, community partnerships, expertise, etc.)• At least one example of an individual or a family the charity has helped• The charity's plans for the future
PRESENTATION SKILLS	<p>Show the judges your presentation skills by:</p> <ul style="list-style-type: none">• Speaking clearly and with confidence• Being creative with how you present your information• Using effective body language (facial expression and gestures) and making eye contact with the audience• Using appropriate audio-visual material to enhance the presentation• Speaking within the time limit (10 minutes)• Preparing your ideas logically and thinking creatively
TEAMWORK SKILLS	<p>Show the judges the teamwork skills you have developed by:</p> <ul style="list-style-type: none">• Giving every team member a role in the presentation• Arranging your presentation so all team members are clear about their roles• Supporting the other team members• Demonstrating team unity• Sharing the reason why this social issue and charity is so important to you as a team

It is ultimately your presentation pitch that will lead you to the semi-finals then the finals

LET'S MAKE IT A GOOD ONE! BE IMAGINATE, CREATIVE AND INFORMATIVE!

Presentation Plan

Using the videos which your teacher has shown you and the success criteria on the previous page, make notes on how you plan to create and deliver an innovative presentation. Think outside the box! Think back to your assembly on presentation skills with Mrs Baird.

Appendices

APPENDIX A: WELCOME TO YPI – VIDEO RESOURCES	45-46
APPENDIX B: LETTER TO PARENTS	47
APPENDIX C: WHAT DO I VALUE? SESSION ONE WORKSHEET	48-50
APPENDIX D: INTRO TO THE ONLINE YPI VALUES TREE	51
APPENDIX E: SOCIAL ISSUES AND SOCIAL SERVICE CHARITIES	52
APPENDIX F: ONLINE TOOLS AND RESOURCES	53
APPENDIX G: DIAMOND 9 ACTIVITY	54
APPENDIX H: EXAMPLES OF VISION/VALUE STATEMENTS	55 -56
APPENDIX I: RESEARCHING AND PRESENTING OUR SOCIAL ISSUE	57-58
APPENDIX J: IDENTIFYING YOUR LOCAL CHARITY	59
APPENDIX K: SHORTLIST OF THREE CHARITIES	60
APPENDIX L: YPI GRANT CRITERIA	61
APPENDIX M: COMMUNICATING WITH CHARITIES	62-67
APPENDIX N: SUPPORTING STUDENT CHARITY VISITS	68
APPENDIX O: PLANNING YOUR INTERVIEW QUESTIONS	69-71
APPENDIX P: CHARITY PROFILES (EXAMPLES)	72-75
APPENDIX Q: YPI PRESENTATION SUCCESS CRITERIA	76
APPENDIX R: CLASS PRESENTATION JUDGING SHEET	77
APPENDIX S: PLANNING & HOSTING THE YPI SCHOOL FINAL	78-80
APPENDIX T: YPI FINAL INVITE TEMPLATES	81-84
APPENDIX U: FINAL PRESENTATION JUDGING SHEET	85
APPENDIX V: CHEQUE REQUEST FORM	86
APPENDIX W: WHOLE SCHOOL IMPACT & COMMUNITY PROFILE	87-88
APPENDIX X: HOW YPI MEETS C FOR E (+ CFE RC MAP)	89-96
APPENDIX Y: GLOSSARY OF TERMS	97-98

<http://ypiscotland.org.uk/>